

Summary- Participant agreement changes

New Statewide Agreement

In October 2025, a new standardized contract – created by the Statewide Health Information Network for New York (SHIN-NY) and called the **Statewide Common Participation Agreement (SCPA)** – started governing participation in the SHIN-NY through Bronx RHIO. This agreement is mandatory for regulated entities as required by the New York State Department of Health (NYSDOH) and replaced legacy/existing Bronx RHIO participation contract.

Move to SCPA, if not already

Regulated Entities – deadline was September 30, 2025

Organizations and individuals mandated by New York State law to participate in the SHIN-NY, including hospitals, clinics, diagnostic/treatment centers, home-care services and hospice providers.

Non-regulated Entities – deadline was March 31, 2026.

Organizations and individuals who voluntarily participate in the SHIN-NY but are not mandated to do so, such as independent private practices, Community Based Organizations, sole practitioners and certain health plans not regulated by the state Department of Health (DOH).

Background and HIN Selection

These changes are part of a larger effort by NYSDOH and SHIN-NY to ensure consistency, strengthen protection, and broadly improve health-related data-sharing. To achieve those objectives, the SCPA aims to: enhance transparency, trust and efficiency by establishing uniform standards for exchanging and using health data; offering participants more flexible and consistent services, including leveraging evolving technologies; and promoting a collaborative process to advance interoperability and best practices.

The SCPA gives you – and all participants – the ability to choose an HIN through which you connect with the SHIN-NY, and to change that designation if you wish. Since the SCPA encompasses all the HINs, organizations and individuals who switch HINs do not need to sign a new contract. In addition, this process assures that all HINs that interact with health data – not just a designated HIN – will abide by consistent privacy and security requirements.

You may connect to more than one HIN, but only one can be selected as your Designated HIN under the SCPA. You will continue to receive value-added services such as data quality offerings, custom

reporting, analytics, etc. as Bronx RHIO members by selecting **Bronx RHIO as your Value-Added Services HIN** and signing our services agreement. Additional HINs may offer optional services, which may incur fees.

Current Members' Next Steps:

1. Fill [this form](#) or email information@bronxrhio.org who the SCPA signer should be for your organization. Bronx RHIO will co-ordinate with NYeC to send the agreement via DocuSign
2. Authorized signer should receive a DocuSign email from NYeC. After receiving the DocuSign, please take the following actions:
 - a. Complete PARTICIPANT section on page 44.
 - b. Complete PARTICIPANT INFORMATION section on page 47.
 - c. Check the box on page 48 to choose Bronx RHIO as your Designated HIN for exchanging data through SHIN-NY and to retain current services. (You can only choose one Designated HIN).
 - d. Check the box on page 48 to choose Bronx RHIO as your Value-Added Services HIN. You can choose *Bronx RHIO* as your Value-added services HIN regardless of which designated HIN is chosen.
 - e. Complete PARTICIPANT section on page 58.
3. Complete and sign Bronx RHIO's [services agreement](#) to continue receiving our value-added services, such as analytics and custom reports.

Additional Information and Resources

The SCPA itself does not contain all participation rules. Rather, it establishes a high-level framework that will be implemented through SHIN-NY's Standard Operating Procedures (SOPs). These SOPs will supplement the SCPA, providing details on various aspects of governance and standards including:

- Privacy and security requirements.
- Data contribution criteria, such as what data participants must provide to a HIN.
- The process by which SHIN-NY participants may select a HIN.
- The services that HINs must make available to SHIN-NY participants.
- The SHIN-NY governance process, known as the statewide collaboration process.

Please refer to [SHIN-NY's overview of the SCPA](#) and [SHIN-NY's FAQ on the SCPA](#) for more details. BronxRHIO held several webinars during the change period for our community to disseminate SCPA changes and detailed information. The webinar slides can be found below.

[Bronx RHIO's Webinar slides on the SCPA- See Appendix](#)
[Bronx RHIO's service agreement](#)

Appendix

Statewide Common Participation Agreement (SCPA)



Who's presenting today?

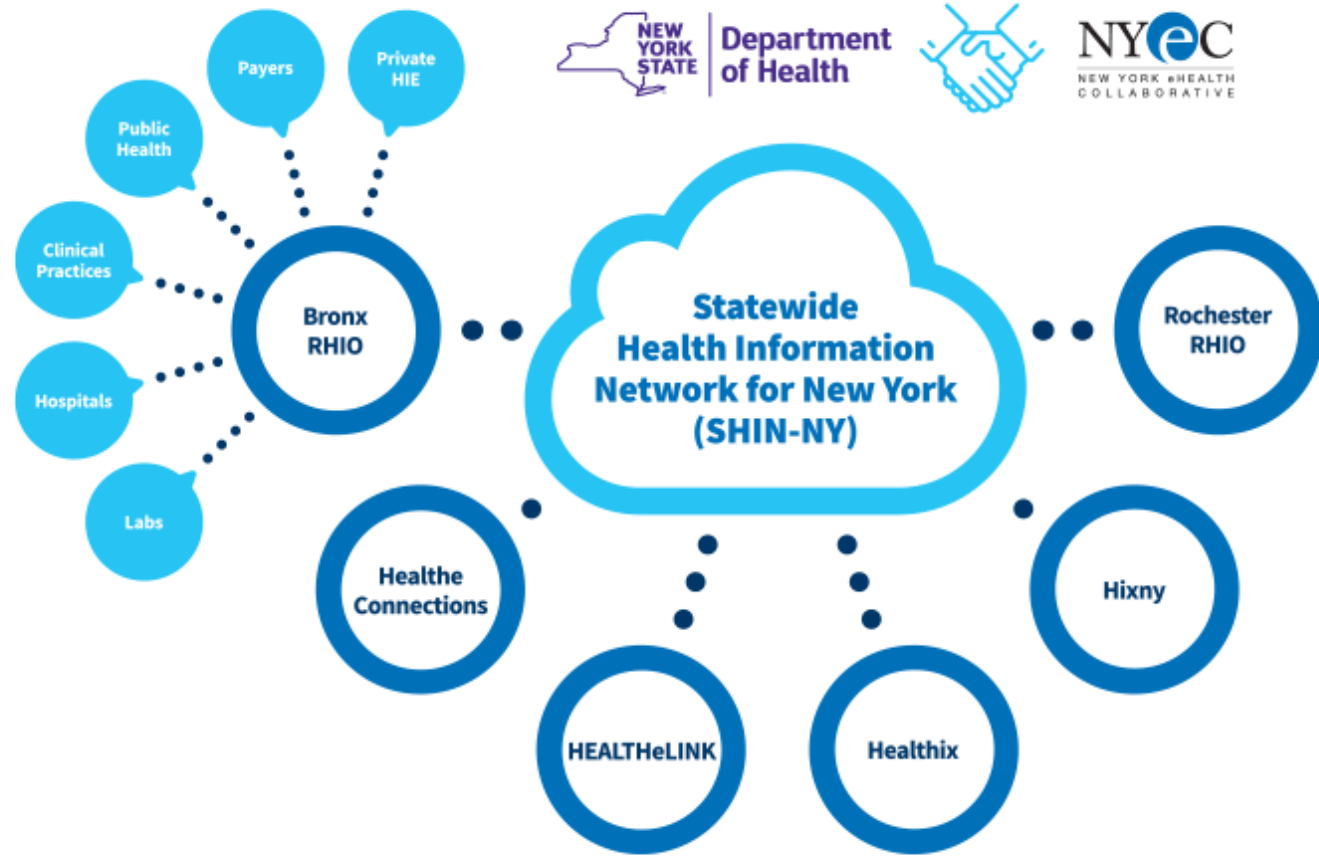
- Charles Scaglione, Executive Director, Bronx RHIO
- Keela Shatzkin, Director of Technical Services, Bronx RHIO

Who needs to attend today?

- Your organization's decision-maker(s) for SCPA participation
- The executive authorized to sign legal documents for your organization
- Anyone else who's interested, such as compliance officers, key decision makers
 - Everyone else is welcome to listen in!

SHIN-NY

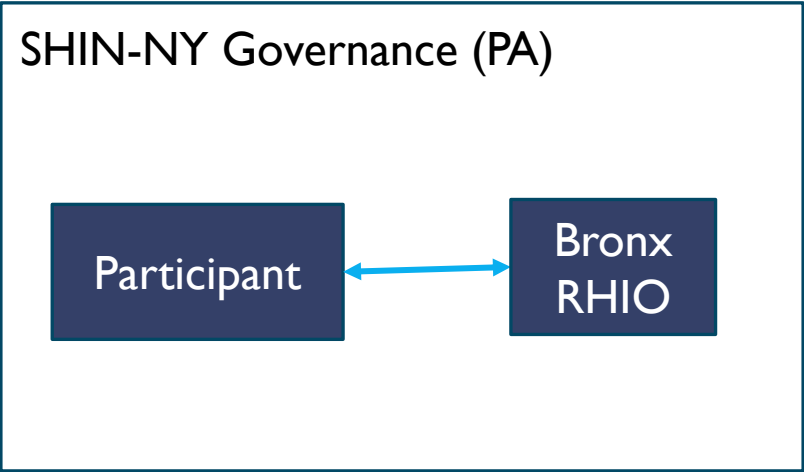
The Network of Networks



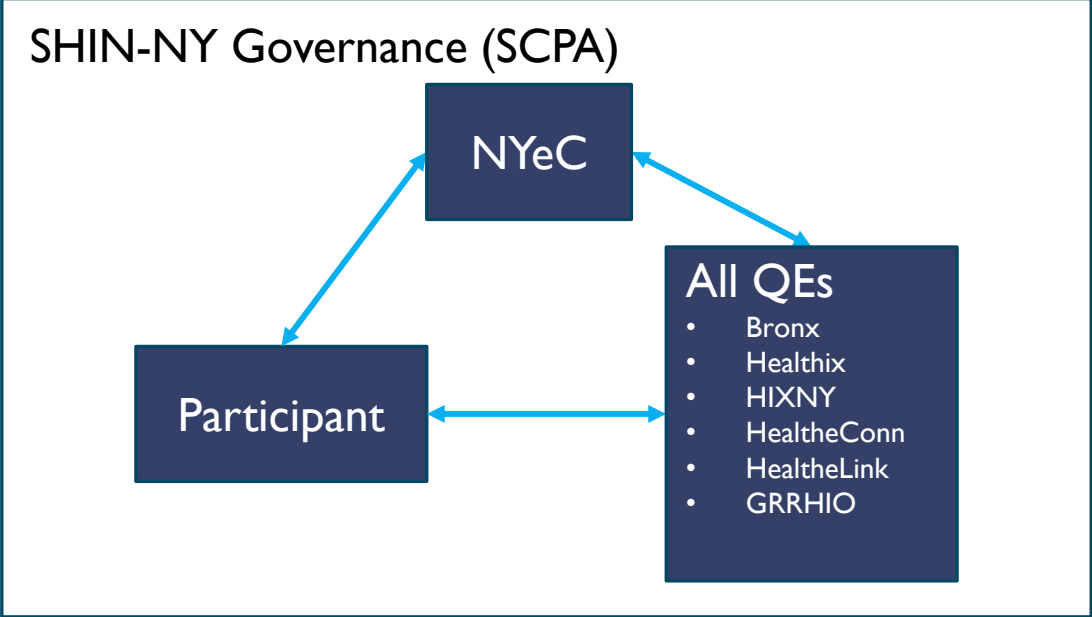
Background on Upcoming Changes

SCPA and Statewide Infrastructure

Current Model



New Model



Background on Upcoming Changes

SCPA and Statewide Infrastructure-2

- Original SHIN-NY regulations in 2016, amended in 2024 for the first time. Established QE's in NY and developed certification program and minimum requirements.
- The SCPA is a new agreement that healthcare-related organizations – providers, payers, public-health entities, community-based organizations (CBOs), etc. – must sign in order to continue participating in the Statewide Health Information Network for New York (SHIN-NY) and providing and/or receiving patient data through secure Health Information Networks (HINs) such as Bronx RHIO.
- The SCPA was developed by the NY State Department of Health (NYSDOH) and New York eHealth Collaborative (NYeC), which is the NYSDOH oversight organization for the six nonprofit regional QE/HINs in the state.
 - It will replace all previous participation agreements in order to align everyone under a common set of terms and obligations.
- The intent of this mandatory agreement is to enhance transparency, trust and efficiency by establishing uniform standards for sharing and using health data; to offer participants more-flexible and consistent services, including by leveraging evolving technologies; and to promote a collaborative process for advancing interoperability and best practices.

Requirements for Participants

Highlights from the SOPs

Data Contributions to the QE:

	Regulated Entities	Non-Regulated Entities
USCDI v1	Required	Encouraged
Encounters	Required: ADT	Encouraged: ADT or CCD

USCDI

- Version defined in the SOPs – currently v1
- Defines required data elements & code standards

Encounters

- Contribute near real-time ADTs for all Clinical Encounters
- Requirements defined in *ADT Data Contribution Specification, Appendix A*

Minimum Bronx RHIO Requirements:

- Patient Information & Consent, Encounters highly recommended

SOP Excerpt

Reference: <https://nyhealth.org/wp-content/uploads/2025/06/Data-Contribution-SHIN-NY-Standard-Operating-Procedure.pdf>

Introduction

In accordance with the Statewide Common Participation Agreement (SCPA), each SHIN-NY Participant that is a Data Provider must Contribute Core SHIN-NY Data to its Designated Health Information Network's (HIN's) SHIN-NY Platform in accordance with this Standard Operating Procedure. "Data Provider" means a SHIN-NY Participant only if such Participant Contributes data to a SHIN NY Platform. All Regulated Participants, including SDI Waiver Participants, shall be Data Providers, and Voluntary Participants may also be required to be Data Providers under the SHIN-NY SOPs. A SHIN-NY Participant can be both a Data Provider and a Data Recipient.]

Such Contributions shall be made in accordance with the following:

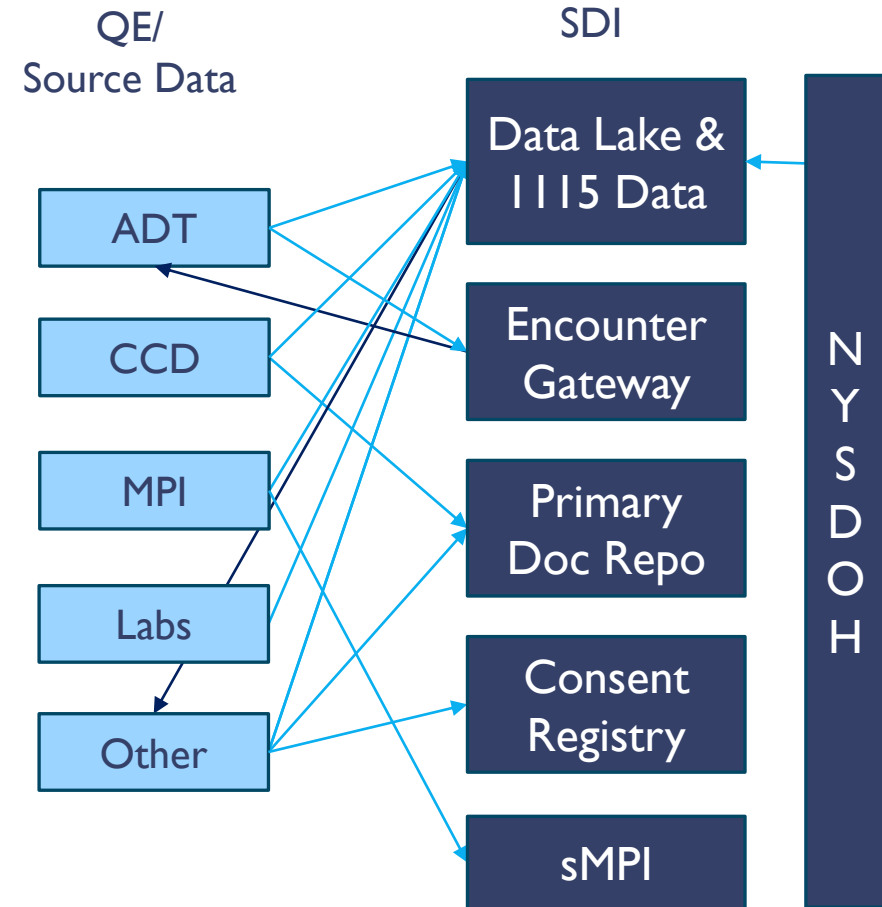
1. **Core QE Data.** If a Data Provider chooses a QE as its Designated HIN on the Election Schedule, the Data Provider must Contribute the following data to the QE Platform:
 - a. **USCDI Data Elements.** Data Providers must, and Voluntary Participants are encouraged to, Contribute United States Core Data for Interoperability (USCDI) v1 (or later versions) data elements as published by the Assistant Secretary for Technology Policy (ASTP)/Office of the National Coordinator (ONC). See <https://www.healthit.gov/isp/united-states-core-data-interoperability-uscdi>
 - b. **Encounter/Event Notification Data.** Encounter/Event Notification Data is both Core QE Data and Core SDI Data (see section 2[b]). Data Providers that are Regulated Participants shall Contribute near real-time Admission, Discharge, Transfer (ADT) data for all clinical encounters in support of the Statewide Encounter Gateway, and in alignment with the ADT data specification defined in the SHIN-NY ADT Data Contribution Specification in Appendix A. Voluntary Participants are encouraged to submit data representing an encounter/event for clinical encounters regardless of standard used to communicate the encounter (e.g. ADT, CCD).

New Requirements for QE/HIN

Highlights from the SOPs

Data Contributions **from** QE to SHIN-NY:

- Patient Identity Data
- Encounter/Event Notification Data
 - Real time ADTs
 - CCD encounter data
- Patient Clinical Observation & Vitals (USCDI v1)
 - Labs
 - Vital Signs
- I115 Waiver Data
 - Screening
 - Assessments
 - Referrals



Requirements for Participants & QE

Highlights from the SOPs

Data Completeness

- Is required data being included to the QE?
 - If there's a code, is there a description and code-system?

Data Conformance

- Is the data being submitted in the USCDI code-set?
- *i.e. Labs are LOINC coded, Procedures are CPT or HCPCs coded*

Minimum Bronx RHIO

- *Does the data received by Bronx RHIO match what's in your EMR?*

Available Data

Data in the Bronx RHIO is constantly growing, expanding and improving

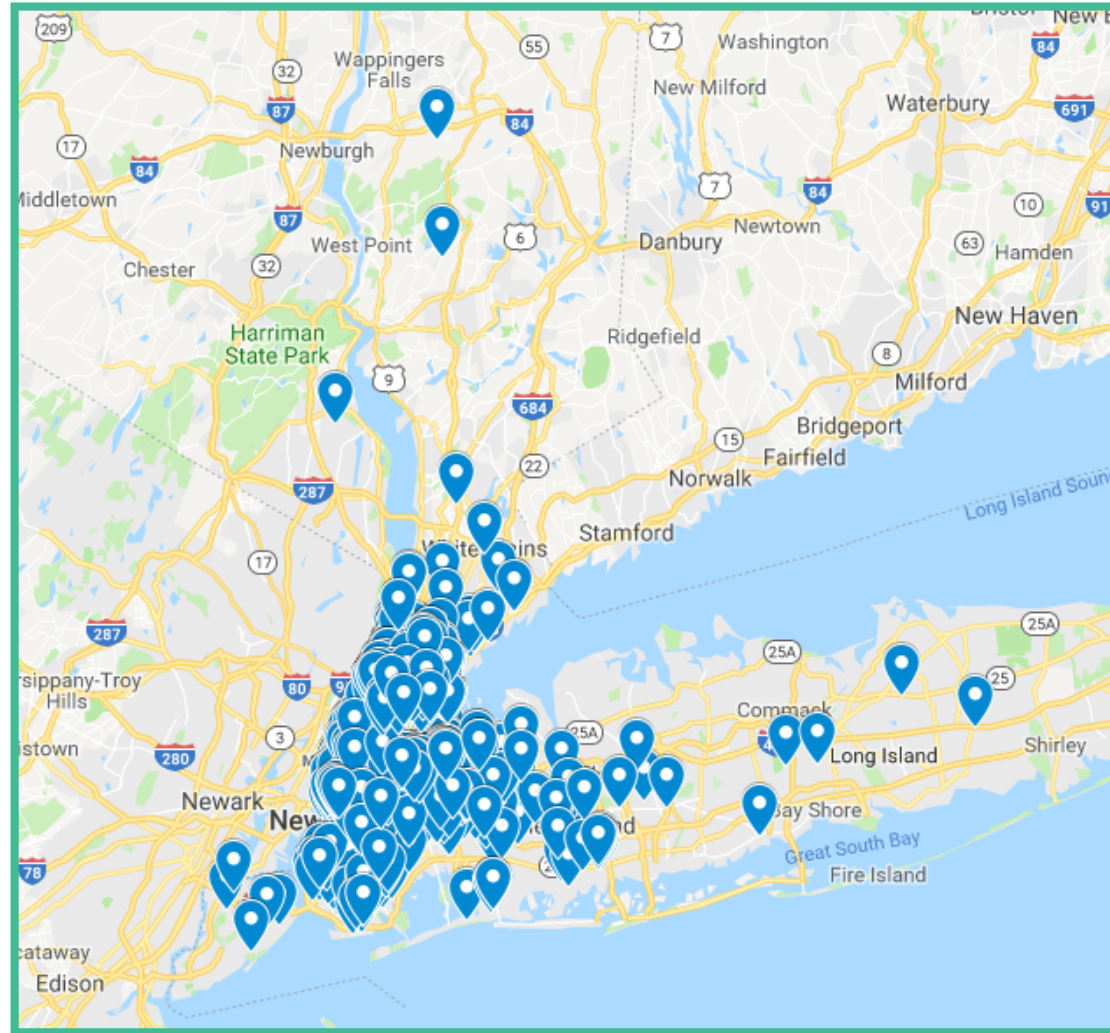
Data flows in real time to the VHR and analytics



- Allergies
- Demographics
- Diagnoses
- Eligibility
- Encounters
- Care Plans
- Cardiology Reports
- Claims/Billing
- Laboratory Data
- Medications
- Observations (Vitals, Assessments)
- Procedures
- Radiology Reports
- Rosters
- Screenings
- Text Reports
 - Progress Notes,
 - Discharge Summaries

Bronx RHIO Geographic Coverage

900+ healthcare organizations across
New York City, Long Island, and the
Hudson Valley



Bronx RHIO's Services Include:

Required Services

- sMPI
- Patient Record Lookup
- Secure Messaging
- Alerts
- Consent Management
- Identity Management & Security
- Results Delivery
- Clinical Viewer
- Public Health Integrations

Data Management

- Alerts your way
- Data Quality Support
- Referral Routing
- Clinical Alerts
- Claims Data Integration
- Data Availability Flags
- Primary Source Data (DAV)

Analytics

- Cohort Management
- Custom Reports
- Disease Specific Reports
- Transition of Care Reports
- Supplemental Data for Regulatory Reporting i.e. HEDIS, UDS
- Patient Snapshots aka Custom Face-Sheets

Advanced Analytics

- Advanced Statistical Modeling
- Data Visualization
- Data Warehousing
- Population Health Reporting
- Custom & Ad-hoc Reporting
- Predictive Modeling
- Research Support



Value-Added Services

Bronx RHIO: The Benefits of Membership

Trusted Data Handling · Analytics & Research Support · Community Focused

Data Stewardship. Bronx RHIO takes the upmost care in ensuring participant data is accurately represented and appropriately translated from EMR to QE to downstream participant.

A Proven Track Record. Bronx RHIO has delivered the highest-quality, secure, trusted and reliable health information exchange services – and much more – for two decades.

Deep Local Expertise and Experience. As the only HIN rooted in the Bronx, we have extensive connections to the community and a deep understanding of its healthcare landscape.

Comprehensive Core and Value-Added Services. Members receive a full and growing suite of tools, integrations, analytics and data-sharing capabilities that meet or exceed SCPA requirements.

Deadlines for signing the SCPA

Regulated Entities: by September 30, 2025

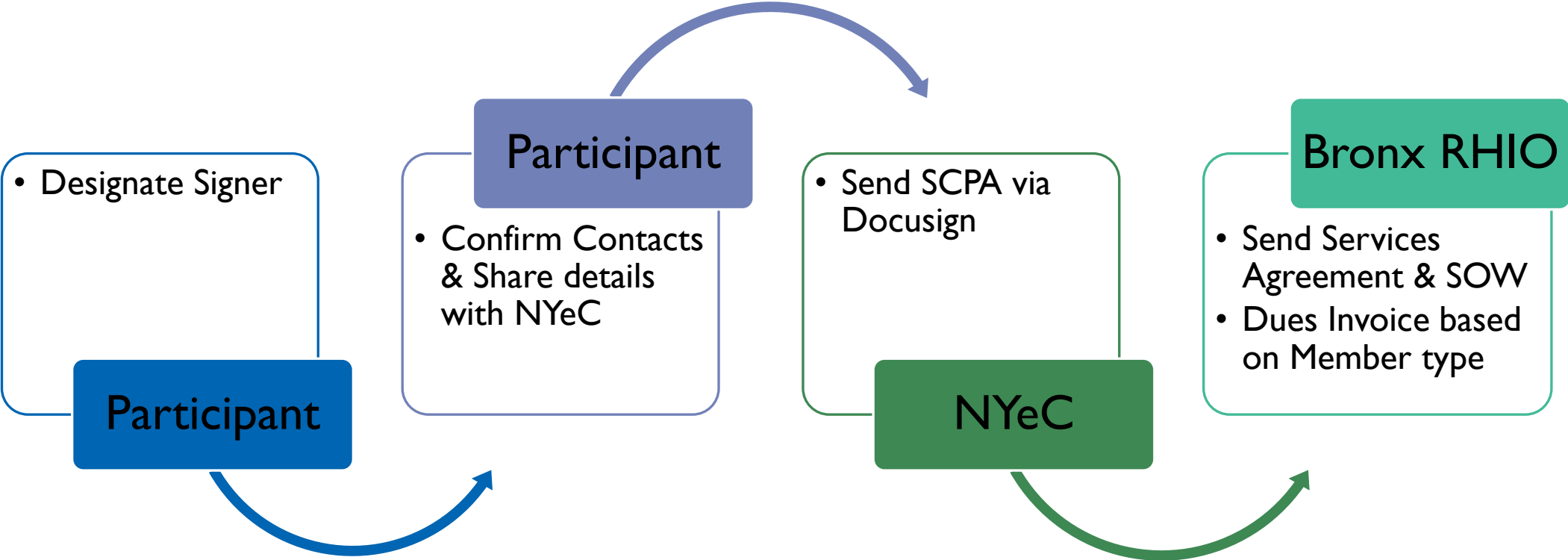
Organizations and individuals mandated by New York State law to participate in the SHIN-NY – including hospitals, clinics, diagnostic/treatment centers, home-care services and hospice providers

Non-regulated Entities: by March 31, 2026

Organizations and individuals who voluntarily participate in the SHIN-NY but are not mandated to do so – such as independent private practices, Community Based Organizations, sole practitioners and certain health plans not regulated by the state Department of Health (DOH)

The statewide services stipulated in your current Bronx RHIO Participation Agreement will end after those deadlines, regardless of whether the SCPA is signed.

SCPA Workflow & Next Steps



Instructions for completing the SCPA

1. Complete NYeC sign up form at SHIN-NY Statewide Common Participation Agreement (SCPA) Contact Form: [Here](#)
 - o Email entered in Question 9 should be the authorized signer for the agreement
2. Authorized signer should receive a Docusign email from NYeC. Click the provided agreement link and fill in the agreement as appropriate noting below:
 - o Page 44: Complete PARTICIPANT section
 - o Page 47: Complete PARTICIPANT INFORMATION
 - o Page 48: Complete (2): Selection of Designated HIN, *check Bronx RHIO*
 - o Page 48: Complete (4): Selection of VAS HIN(s), *check Bronx RHIO*
 - o Page 58: Complete PARTICIPANT section

Once the SCPA is signed, you'll be asked to sign Bronx RHIO's **services agreement** to receive our value-added services, such as analytics and custom reports.

Note: You can choose Bronx RHIO as your value-added services HIN regardless of which Designated HIN is chosen.