

# Mandatory New Statewide Agreement

Beginning in October 2025, a new standardized contract – created by the Statewide Health Information Network for New York (SHIN-NY) and called the **Statewide Common Participation Agreement (SCPA)** – will govern participation in the SHIN-NY through Bronx RHIO. This mandatory agreement, required by the New York State Department of Health (NYSDOH), will replace your current/existing Bronx RHIO participation contract.

## *Deadlines are Coming Up*

### Regulated Entities - must sign the SCPA by **September 30, 2025**

Organizations and individuals mandated by New York State law to participate in the SHIN-NY, including hospitals, clinics, diagnostic/treatment centers, home-care services and hospice providers.

### Unregulated Entities - must sign by **March 31, 2026**.

Organizations and individuals who voluntarily participate in the SHIN-NY but are not mandated to do so, such as independent private practices, Community Based Organizations, sole practitioners and certain health plans not regulated by the state Department of Health (DOH).

**All existing agreements, along with the services they stipulate, will end after those deadline dates, regardless of whether an SCPA is signed.**

## Current Members' Next Steps:

1. Fill [this form](#) or email [information@bronxrhio.org](mailto:information@bronxrhio.org) who the SCPA signer should be for your organization. BronxRHIO will co-ordinate with NYeC to send the agreement via DocuSign
2. After receiving DocuSign, please take the following two actions while signing it:
  - Check the box for choosing **Bronx RHIO as your Designated Health Information Network (HIN)** for exchanging data through SHIN-NY and to retain current services. (You can only choose one HIN)
  - Check the box to choose **Bronx RHIO as your Value-Added Services HIN**.
3. Complete and sign Bronx RHIO's [services agreement](#) to continue receiving our value-added services, such as analytics and custom reports. You can choose *Bronx RHIO* as your Value-added services HIN regardless of which designated HIN is chosen.

## Background and HIN Selection

These changes are part of a larger effort by NYSDOH and SHIN-NY to ensure consistency, strengthen protection, and broadly improve health-related data-sharing. To achieve those objectives, the SCPA



Updated: 9/8/2025

aims to: enhance transparency, trust and efficiency by establishing uniform standards for exchanging and using health data; offering participants more flexible and consistent services, including leveraging evolving technologies; and promoting a collaborative process to advance interoperability and best practices.

The SCPA gives you – and all participants – the ability to choose an HIN through which you connect with the SHIN-NY, and to change that designation if you wish. Since the SCPA encompasses all the HINs, organizations and individuals who switch HINs do not need to sign a new contract. In addition, this process assures that all HINs that interact with health data – not just a designated HIN – will abide by consistent privacy and security requirements.

You may connect to more than one HIN, but only one can be selected as your Designated HIN under the SCPA. You will continue to receive value-added services such as data quality offerings, custom reporting, analytics, etc. as Bronx RHIO members by selecting **Bronx RHIO as your Value-Added Services HIN** and signing our services agreement. Additional HINs may offer optional services, which may incur fees.

## Additional Information and Resources

The SCPA itself does not contain all participation rules. Rather, it establishes a high-level framework that will be implemented through SHIN-NY's Standard Operating Procedures (SOPs). These SOPs will supplement the SCPA, providing details on various aspects of governance and standards including:

- Privacy and security requirements.
- Data contribution criteria, such as what data participants must provide to a HIN.
- The process by which SHIN-NY participants may select a HIN.
- The services that HINs must make available to SHIN-NY participants.
- The SHIN-NY governance process, known as the statewide collaboration process.

Please refer to [SHIN-NY's overview of the SCPA](#) and [SHIN-NY's FAQ on the SCPA](#) for more details. BronxRHIO held webinars during the month of August and September for our community to disseminate SCPA changes and detailed information. The webinar slides can be found below.

[Bronx RHIO's Webinar slides on the SCPA- See Appendix](#)  
[Bronx RHIO's service agreement](#)

## Appendix

CELEBRATING  
**20** YEARS  
OF SERVICE

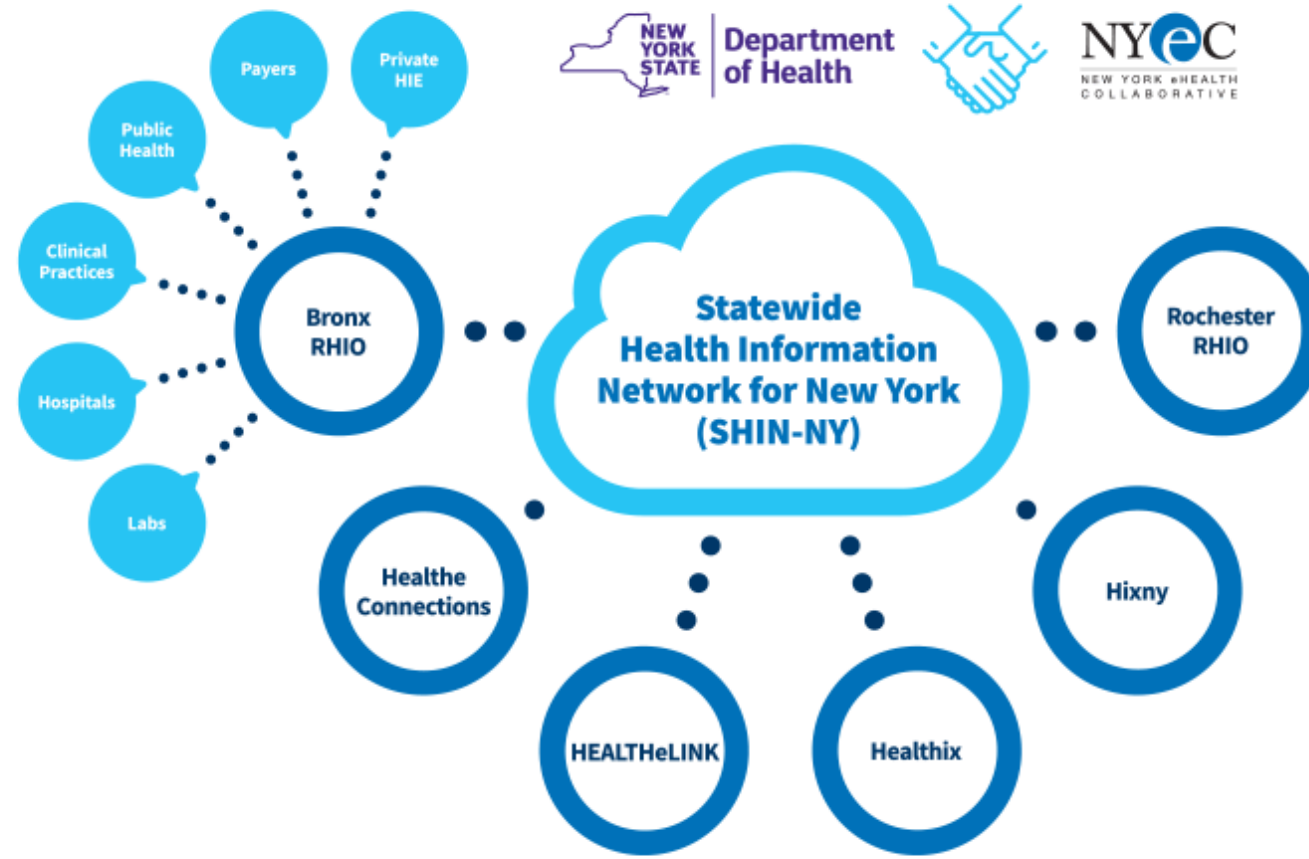


*Bronx* RHIO  
*Connecting for Better Health*



# SHIN-NY

## The Network of Networks



# Background on Upcoming Changes

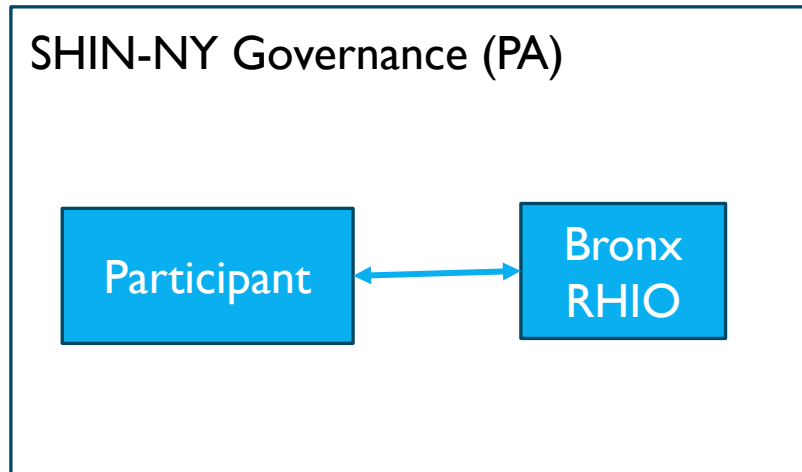
## SCPA and Statewide Infrastructure

- Original SHIN-NY regulations in 2016, amended in 2024 for the first time. Established QE's in NY and developed certification program and minimum requirements.
- The SCPA is a new agreement that healthcare-related organizations – providers, payers, public-health entities, community-based organizations (CBOs), etc. – must sign in order to continue participating in the Statewide Health Information Network for New York (SHIN-NY) and providing and/or receiving patient data through secure Health Information Networks (HINs) such as Bronx RHIO.
- The SCPA was developed by the NY State Department of Health (NYSDOH) and New York eHealth Collaborative (NYeC), which is the NYSDOH oversight organization for the six nonprofit regional QE/HINs in the state.
  - It will replace all previous participation agreements in order to align everyone under a common set of terms and obligations.
- The intent of this mandatory agreement is to enhance transparency, trust and efficiency by establishing uniform standards for sharing and using health data; to offer participants more-flexible and consistent services, including by leveraging evolving technologies; and to promote a collaborative process for advancing interoperability and best practices.

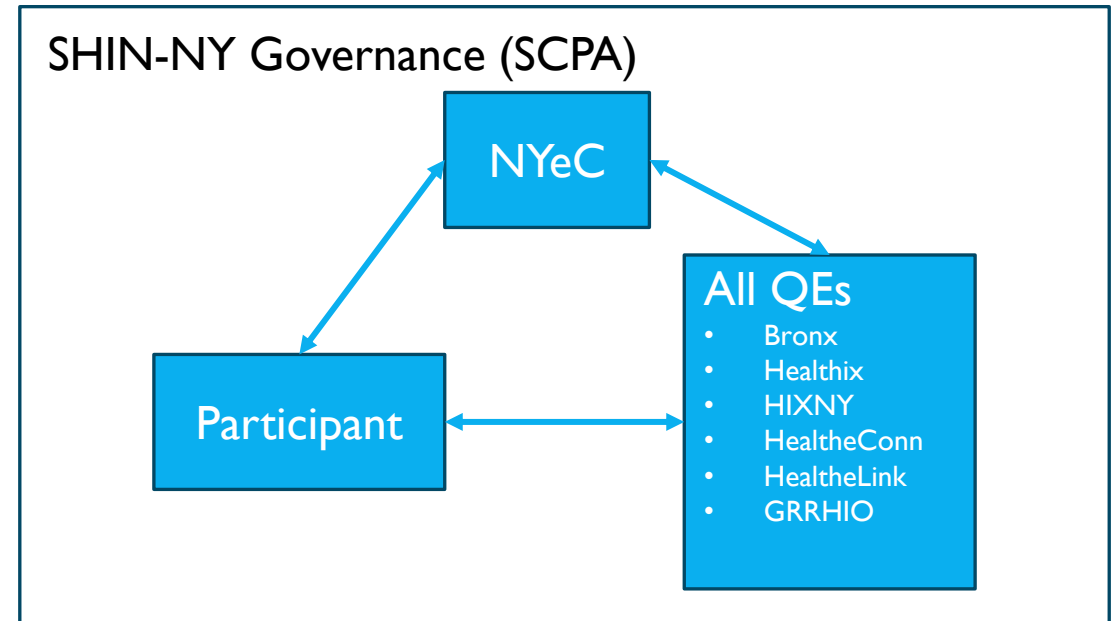
# Background on Upcoming Changes

## SCPA and Statewide Infrastructure

Current Model



New Model



# Requirements for Participants

## Highlights from the SOPs

Data Contributions to the QE:

	Regulated Entities	Non-Regulated Entities
USCDI v1	Required	Encouraged
Encounters	Required: ADT	Encouraged: ADT or CCD

### USCDI

- Version defined in the SOPs – currently v1
- Defines required data elements & code standards

### Encounters

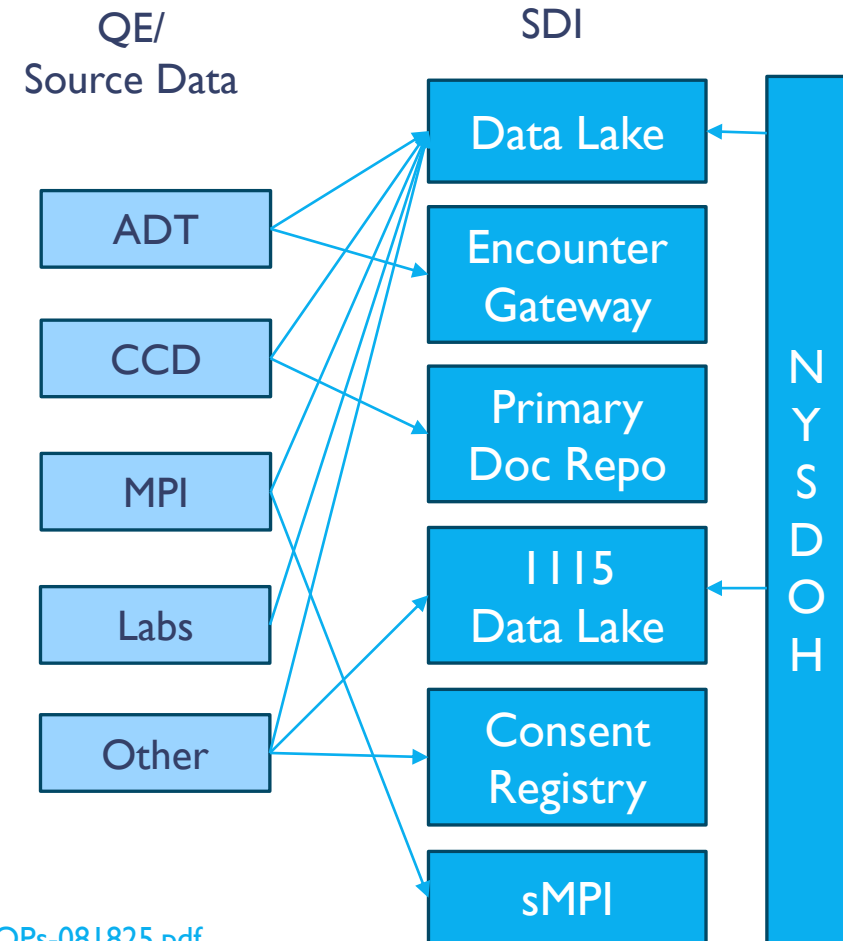
- Contribute near real-time ADTs for all Clinical Encounters
- Requirements defined in *ADT Data Contribution Specification, Appendix A*

# New Requirements for QE/HIN

## Highlights from the SOPs

### Data Contributions **from** QE to SHIN-NY:

- Patient Identity Data
- Encounter/Event Notification Data
  - Real time ADTs
  - CCD encounter data
- Patient Clinical Observation & Vitals (USCDI v1)
  - Labs
  - Vital Signs
- I115 Waiver Data
  - Screening
  - Assessments
  - Referrals





# Requirements for Participants & QE

## Highlights from the SOPs

---

### **Data Completeness**

- Is required data being included to the QE?
  - If there's a code, is there a description and code-system?

### **Data Conformance**

- Is the data being submitted in the USCDI required code-set?
- *i.e. Labs are LOINC coded, Procedures are CPT or HCPCs coded*

# Available Data

Data in the Bronx RHIO is constantly growing, expanding and improving

Data flows in real time to the VHR and analytics



Allergies  
Demographics  
Diagnoses  
Eligibility  
Encounters  
Care Plans  
Cardiology Reports  
Claims/Billing  
Laboratory Data  
Medications  
Observations (Vitals, Assessments)  
Procedures  
Radiology Reports  
Rosters  
Screenings  
Text Reports  
- Progress Notes,  
- Discharge Summaries

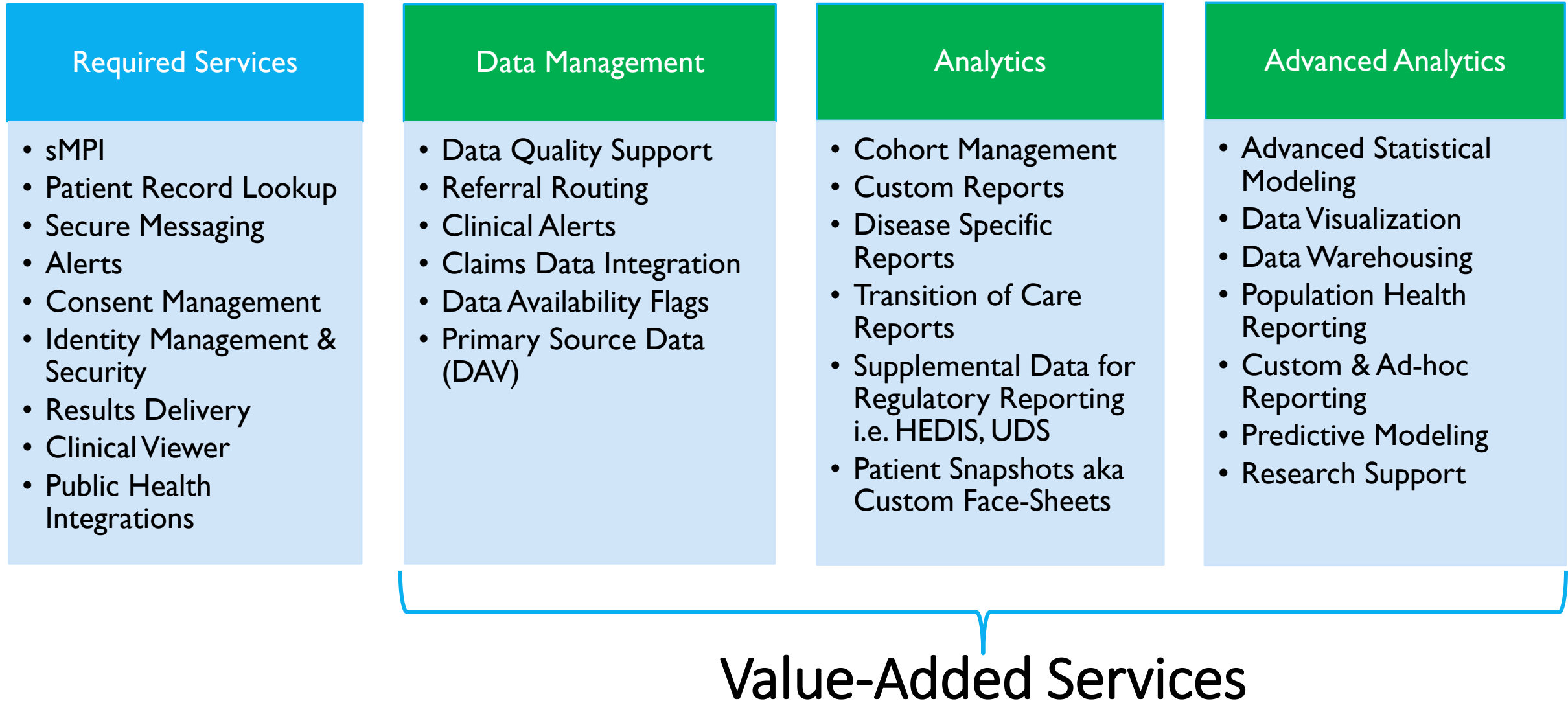
Bronx RHIO  
Patient Lookup &  
Analytics Database

# Bronx RHIO Geographic Coverage

900+ healthcare organizations across  
New York City, Long Island, and the  
Hudson Valley



# Bronx RHIO's Services Include:



# Bronx RHIO: The Benefits of Membership

Trusted Data Handling · Analytics & Research Support · Community Focused

---

**Data Stewardship.** Bronx RHIO takes the upmost care in ensuring participant data is accurately represented and appropriately translated from EMR to QE to downstream participant.

**A Proven Track Record.** Bronx RHIO has delivered the highest-quality, secure, trusted and reliable health information exchange services – and much more – for two decades.

**Deep Local Expertise and Experience.** As the only HIN rooted in the Bronx, we have extensive connections to the community and a deep understanding of its healthcare landscape.

**Comprehensive Core and Value-Added Services.** Members receive a full and growing suite of tools, integrations, analytics and data-sharing capabilities that meet or exceed SCPA requirements.

# Deadlines for signing the SCPA

---

## **Regulated Entities: by September 30, 2025**

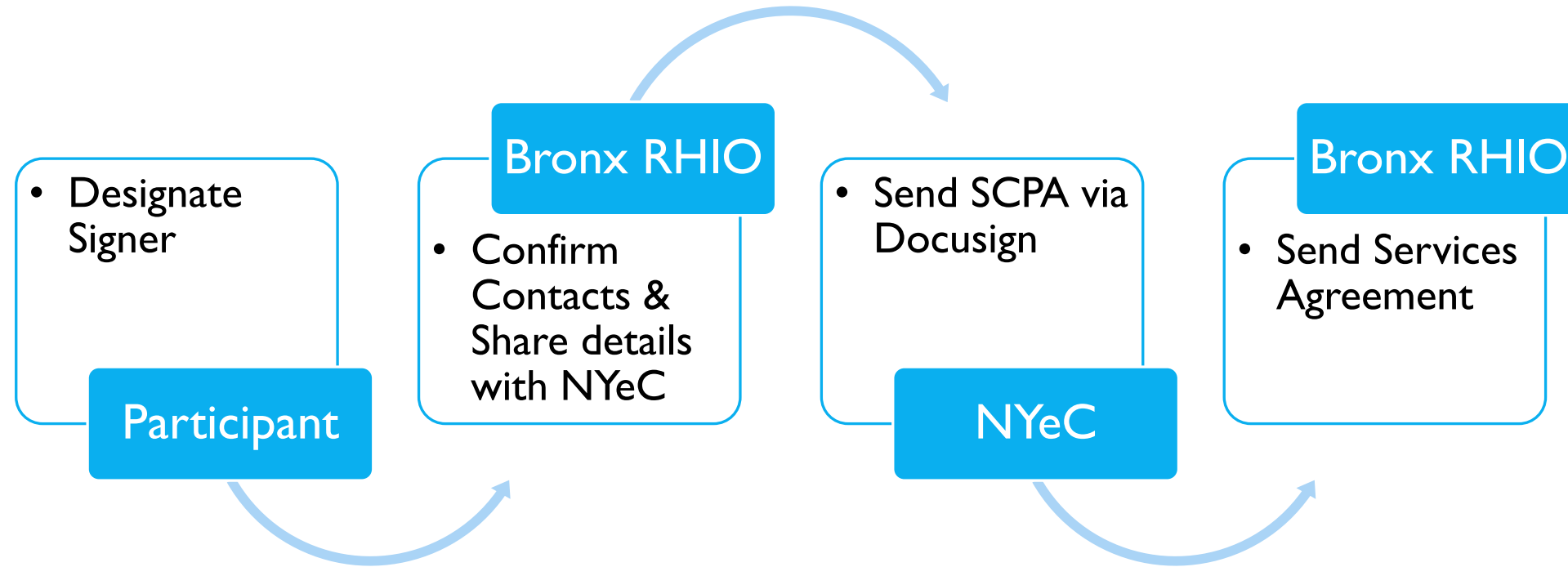
Organizations and individuals mandated by New York State law to participate in the SHIN-NY – including hospitals, clinics, diagnostic/treatment centers, home-care services and hospice providers

## **Non-regulated Entities: by March 31, 2026\* (updated)**

Organizations and individuals who voluntarily participate in the SHIN-NY but are not mandated to do so – such as independent private practices, Community Based Organizations, sole practitioners and certain health plans not regulated by the state Department of Health (DOH)

The statewide services stipulated in your current Bronx RHIO Participation Agreement will end after those deadlines, regardless of whether the SCPA is signed.

# SCPA Workflow & Next Steps



# Instructions for completing the SCPA

---

When the time comes to sign the SCPA, **please take the following two actions:**

- **Check the box to choose Bronx RHIO** as your Designated Health Information Network (HIN) for exchanging data through the SHIN-NY. (You may choose only one.)
- **Check the box to choose Bronx RHIO** as your VAS (Value Added Services) HIN.

**Read and sign Bronx RHIO's service agreement** to continue receiving our value-added services, such as analytics and custom reports (regardless of which Designated HIN you choose).

**Information@BronxRHIO.org**



CELEBRATING  
**20** YEARS  
OF SERVICE



*Bronx* RHIO  
*Connecting for Better Health*

